

# Apollo Box Applicator

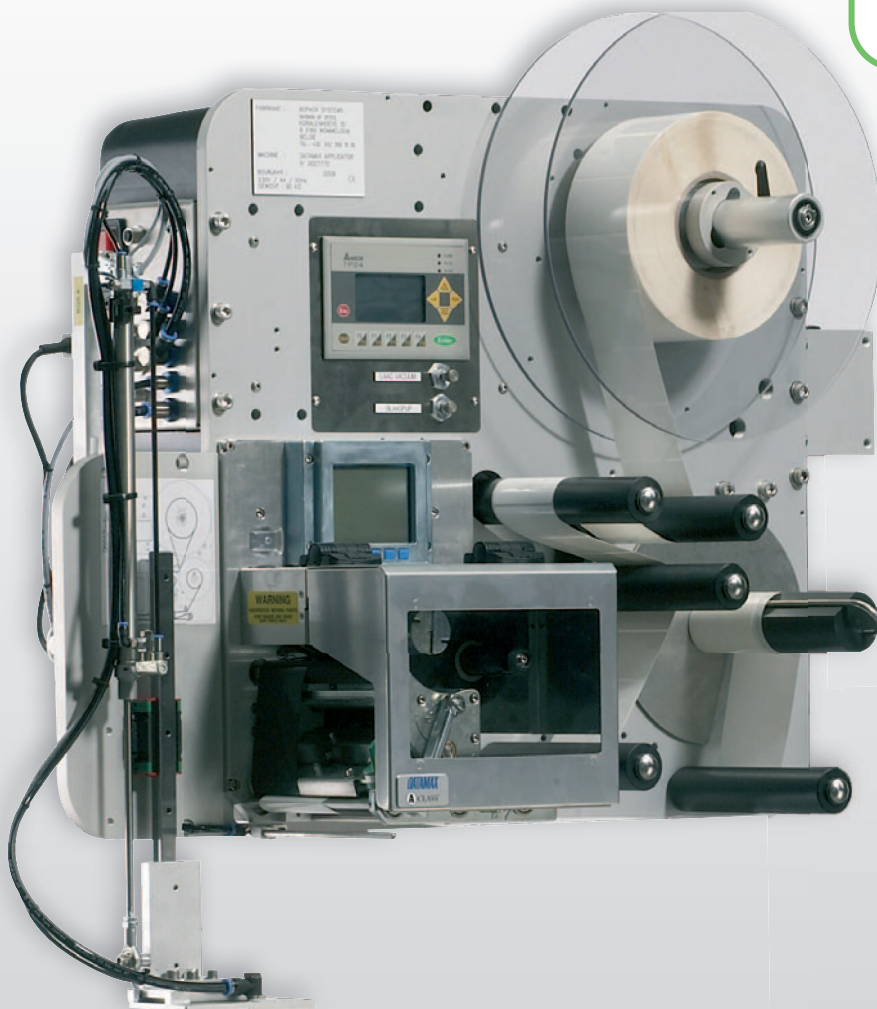
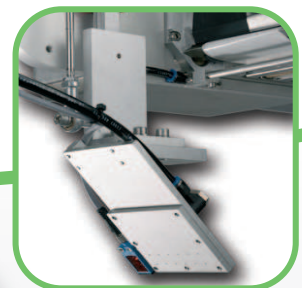


## Flexible box labeller with various applicator arms

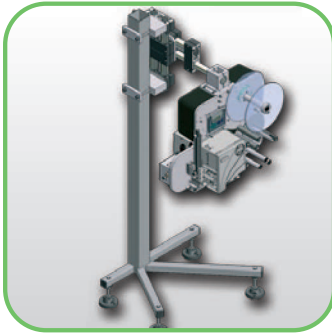
The Apollo Box Applicator is based on the universal building block of our printer applicator product range. It allows for many configurations with various applicator arms, to efficiently apply labels on the top, side, front, back and corner of boxes of various sizes and shapes. With its robust and modular design, this solution is your safe choice in demanding and high volume environments.

### FEATURES

- Own product, in house designed and assembled
- Standard mounting block (unwinder, print engine, rewinder) independent of print engine, applicator or mounting direction
- Various applicators and print engines can be fitted on the same base plate
- Built-in controller supporting the different movements of all available applicators. Depending on the selected applicator, switching between different ways of working of the applicator arm is possible
- A variety of I/O's are available for use with external systems

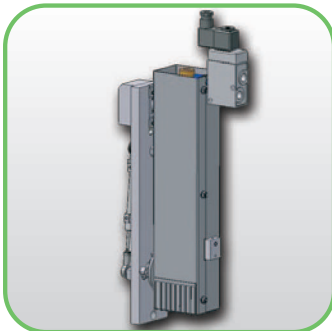


# Apollo Box Applicator



## Technical specifications

- One single anodized aluminium base plate for:
  - Unwinder and clutchless rewinder
  - Print engines of various manufacturers
  - A variety of applicator arms
  - All mounting positions
  - Left or right installation
- Unwinder
  - Inner Ø: 40mm
  - Outer Ø: 350mm
- Processable label dimensions
  - Width: 25 - 155mm
  - Length: 30 - 220mm
  - Core Ø: 40 - 76mm
- Power: 240VAC, 50Hz, 5A
- Air: Clean compressed air 6 bar
- Pneumatics: FESTO
- L x W x H: 800 x 480 x 590 mm
- Weight: +/- 70Kg



## Applicator arms

- Linear push and blow applicator, stroke length 200 mm. Other stroke lengths available on request
  - Pivoting applicator
  - Blow applicator
  - Smart applicator for very short application times.
- Other applicator arms on request and after study of the application.



## Add-Ons

Almost end of label roll detection

End of label roll detection

Light beacon (1 to 3 lamps)

On demand sensor on vacuum plate

Counter pressure sensor on cylinder

Automatic stroke length detection

Additional vacuum plates

Rewinder with dancer arm

External electrical cabinet

Barcode scanner (SICK CLV620)

Stainless steel support

Height adjustment

Side Adjustment

Motorized adjustments

Indicator on adjustments

Several types of product detection

Other add-ons (electrical or mechanical) available on request and after study of the application.

